



ASSORTED
SKILLS +
TALENTS

Why the f*** work with us?

Architecture
Design
Strategy
Narrative
Communication

www.assortedskillstalents.com

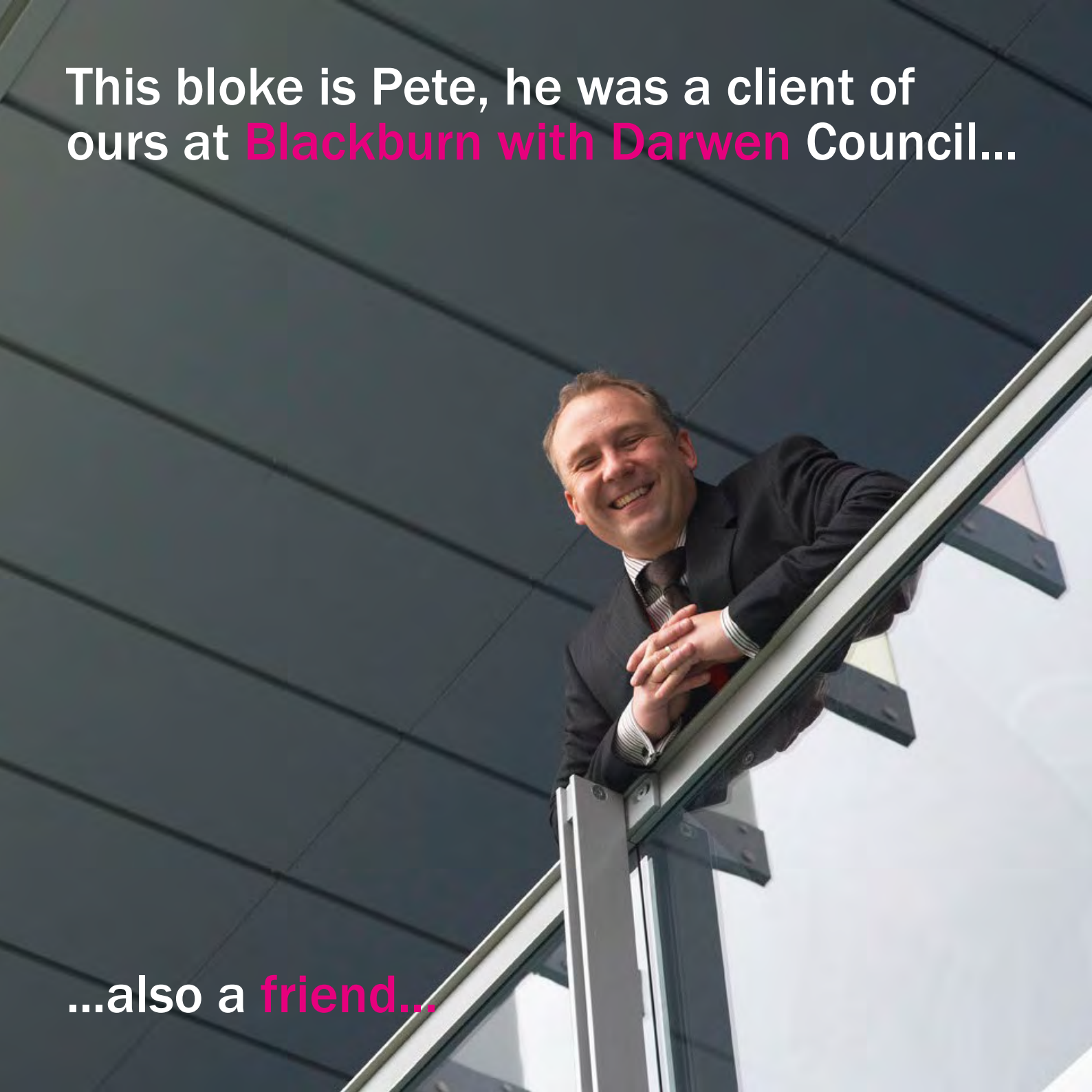
Founded in 2017 by **Chris Boyce**, a well known + respected designer, architectural commentator + former Design Director of AJ100 top 10 practice....**blah blah blah...**

Nope, that's **NOT** why...

Here's why...

This bloke is Pete, he was a client of ours at **Blackburn with Darwen Council**...

...also a **friend**...



Pete urgently needed to replace a school, a **damp, dark + depressing** Victorian pile on a hillside in Blackburn. He had a limited budget + no time...



The coalition were new in power + planned to **stop all capital projects** in a few months.

What we created together was swift, **fun + changed lives.**

He helped us build this...

It's subtle...



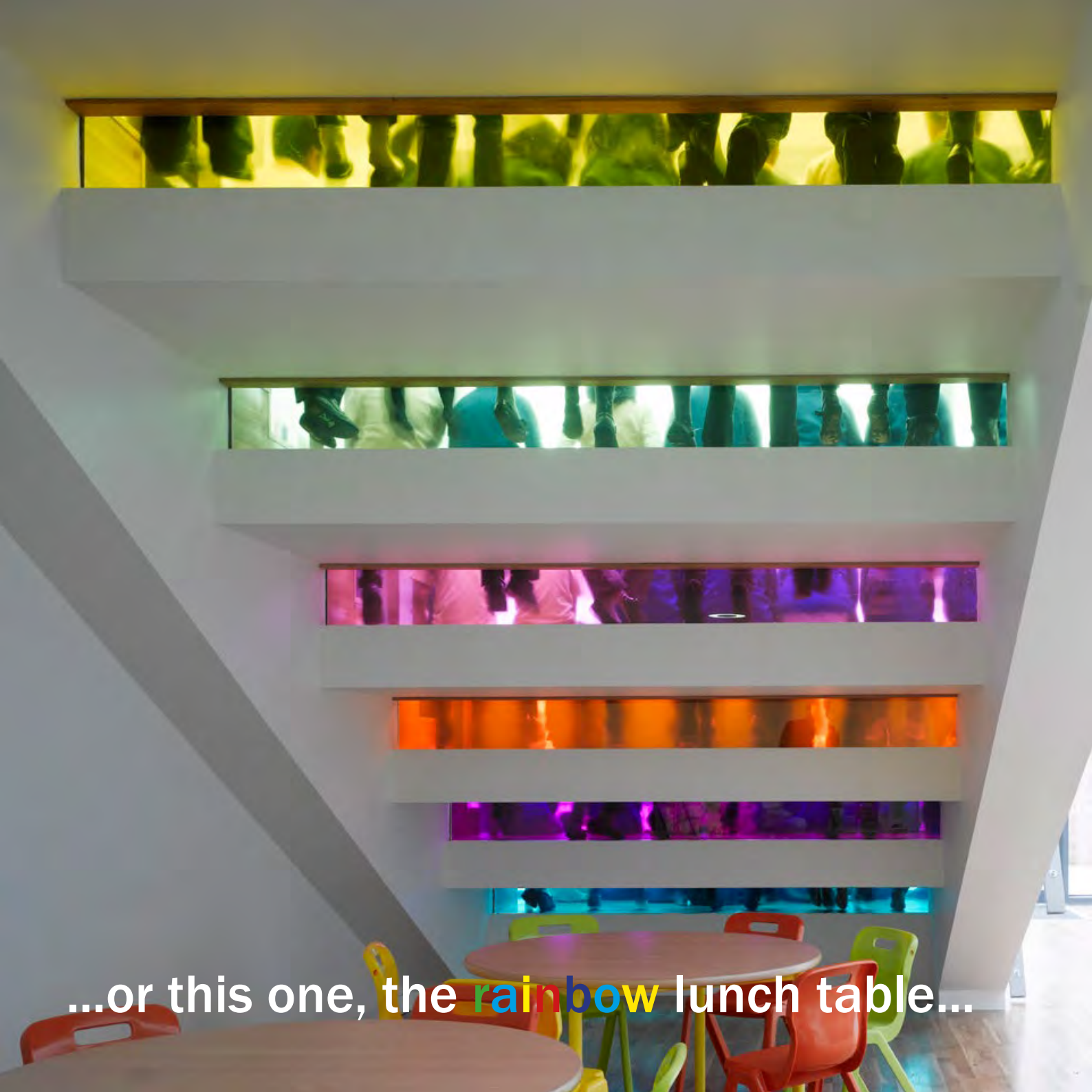
In 2013 when the **Stirling prize long list** was news (for 10 min) this was the lead image in The Times, The Telegraph, The Independent, The Guardian and BBC News...



Its not subtle...but we can be...

But this is the image we carry in our minds when we think back to what we did at **St Silas School...**

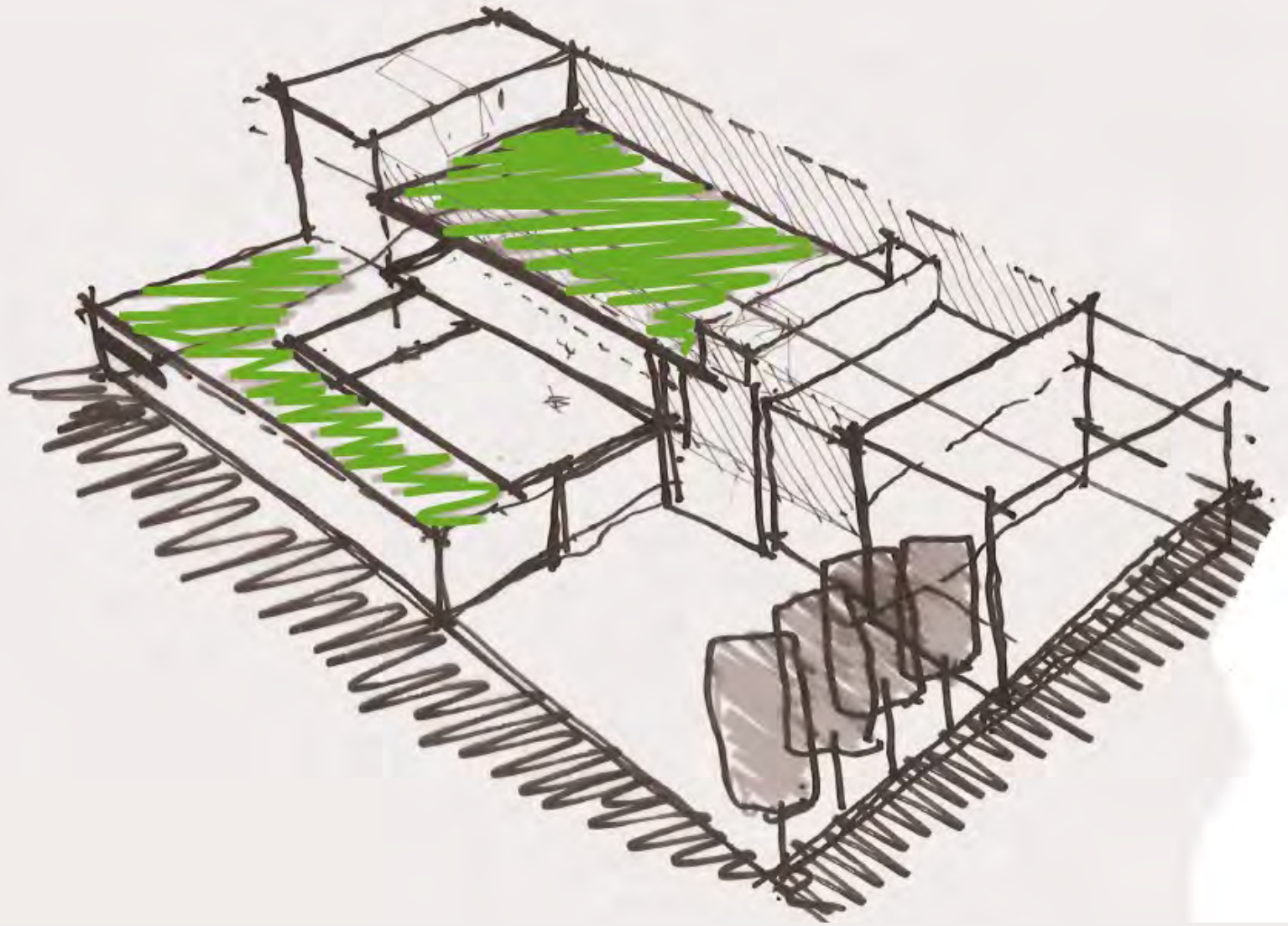




...or this one, the rainbow lunch table...

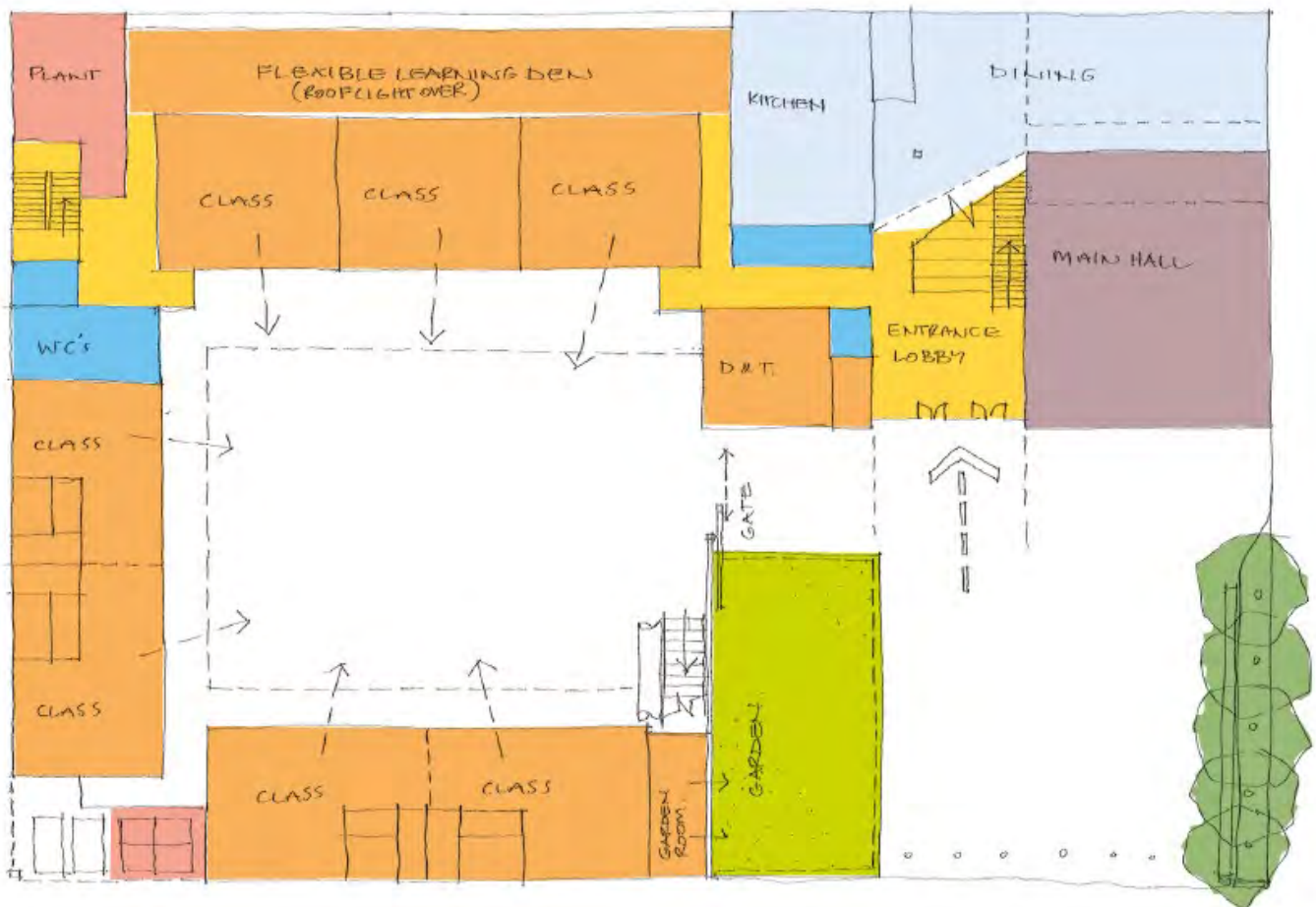


...or this one, of **“the secret”** classroom...



We made a school that worked like a little **jewellery box**, layering uses across the site to create multiple levels of activity...

...wrapped round a courtyard, that is both **transparent + secure**, each classroom focuses on that space, while public functions are linked across the site from a **new public space**.





A tiny site where every square metre works **twice** as hard + each space interlocks to create **flexible** pedagogy...

...with an **astro pitch on the roof** + a mini race track in the courtyard...

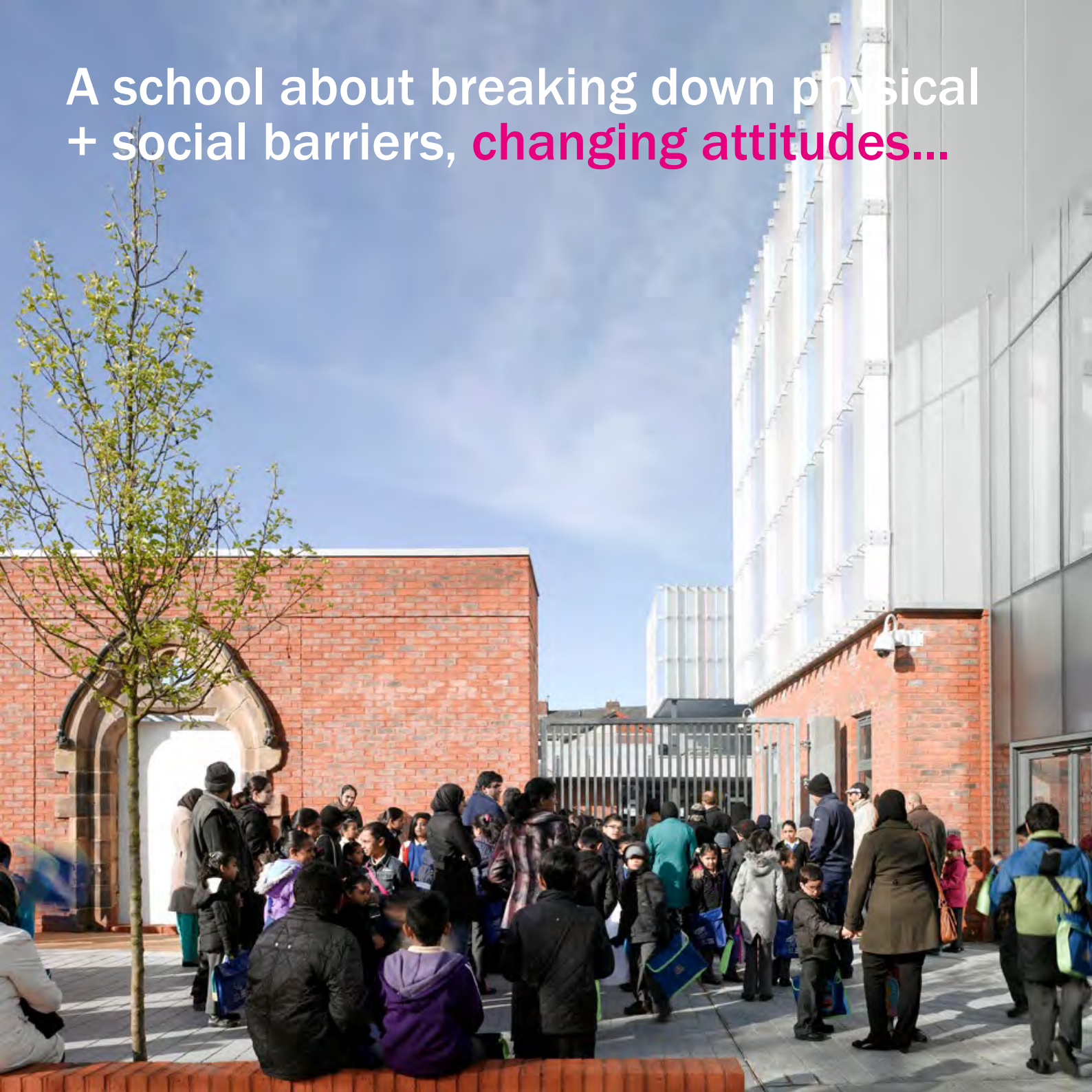


A school for a **community**, which for cultural reasons didn't interact with the old school* at all...



*spot the original 19th Century door - which has a legend attached!

A school about breaking down physical
+ social barriers, **changing attitudes...**



A school that has improved education outcomes + is **changing religious + cultural perceptions** for many; creating; a **school for everyone...**



It won us a few shiny **awards**, but we are most proud of the **RIBA client of the year** award for Hilary + Pete, because they let us **care** about the real clients, the kids who will learn here in years to come...

“We proved...that design matters, joy matters, and that the very best can be achieved with the right vision, and the best design team. Chris and Duncan made this school remarkable, within a tight budget. The kids love the school, and its so open, so easy for parents to come in now and take part; I love it.....”

Hilary Hinchcliffe - Head teacher



- 2013 RIBA Regional Award
- 2013 RIBA National Award
- 2013 RIBA Client of the year award
- AJ Schools Special 2013 - front cover
- AJ Schools Special 2013 - 4 page feature
- June 2013 The Independent; “Education dominates; RIBA Stirling Prize” image leader/article
- June 2013 Guardian “If you build it: RIBA Stirling Prize long list” image leader/article
- Architecture Record China 6 page article
- June 2013 Times online “Stirling Prize” image leader
- 2013 Civic Trust Award (commendation)
- 2014 North West Construction Award short-list
- 2014 Partnerships Awards “best designed project”



We made a school filled with love.

So who are we?

Based in Manchester + London, we pride ourselves on being **open** minded, non-specific, full of energy + sound of judgement.

We think in **space + light**, but we talk in **values/appraisals** + measurable outcomes. We **listen** first, then **listen** again.

We are social anthropologists, **story tellers** + urban explorers. We will fulfil your expectations + **challenge** you.

How can we say that?



Let us tell you another story...

We got a call one night, in 2017 from a client who did “big housing” with us about a **charity** she had become a trustee of in London...



They had a problem...

A **dilapidated** building in an **extraordinary** position on the River Thames; a rowing club dating from 1889. It needs some **love...**

The membership was aging, the future looked uncertain, but the club's history was one of **subversive** social revolution mixed with **sporting excellence...**

We won the competition, but had never designed a rowing club...

I mean, who has huh?





This is **much** worse than it looks.

But **why** just restore an elitist, posh boys playground?

Why not **do more?**

We developed a wider brief with the client to **reach out** beyond the club, beyond the fee paying schools who dominate access to the sport + to find a kid, from a very **different social + cultural background** who has never thought of rowing, never heard of it. **Why?**

Because we think **sport can effect social change**, when that is so hard to do these days...

Back in **1889** **Quintin Hogg** set up the Polytechnic Rowing Club (now the Quintin Boat Club) to **subvert** the rules of Henley Royal Regatta...

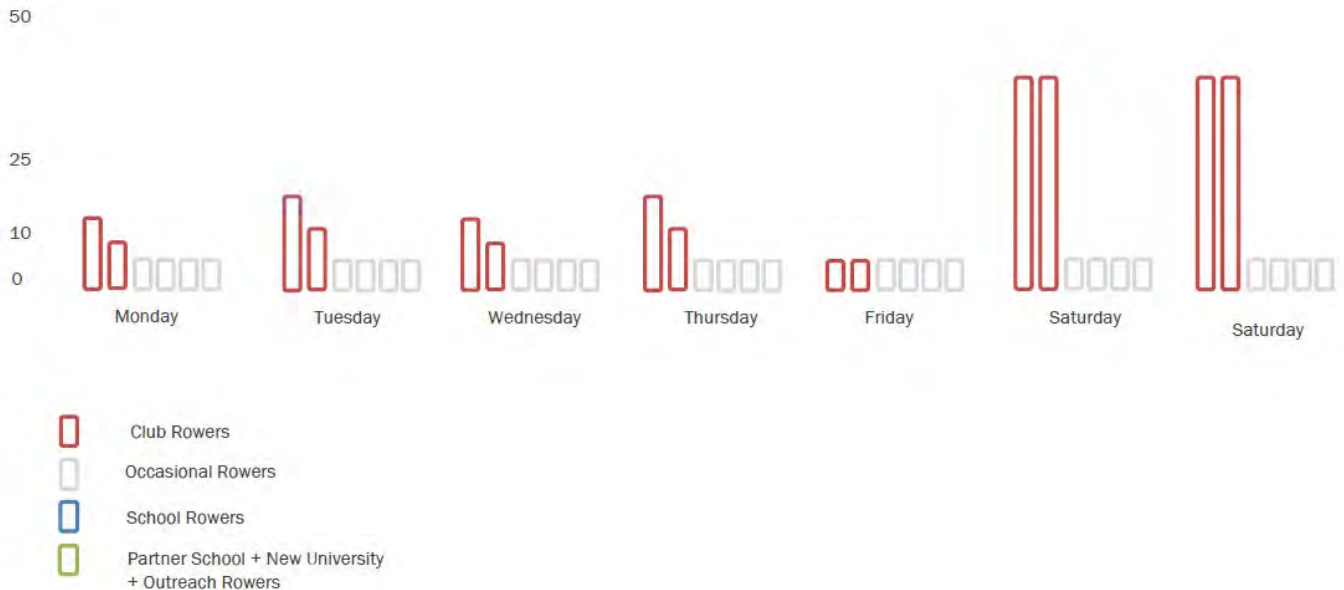


We know, this lot don't look **subversive**...

So we did some **magic thinking** via some **boring numbers** stuff with the Captain of the club, Mark. We had an **idea** as to how we could create **free rowing** for schools...

Boats	QBC (4)	KEW (1)	T1 (2)	T2 (3)	ad hoc boats	Total		
singles	81	6	10	14	0	111		
doubles	21	0	7	9	0	37		
triples	2	0	0	0	0	2		
quads	20	0	6	11	0	37		
VIII	9	4	1	8	0	22		
LTR	0	4	0	0	0	4		
Total Boats	133	14	24	42	0	213		
Youth/Outreach suitable (LTR + 2/3/4 VIII)	52	0	8	14	0	0		
River Time* hrs	104	0	16	28	0	56	204 hrs	
Coach Time** hrs	2.6	0.0	0.4	0.0	0.7	0.0	1.4	5.1 hrs
COMMITMENT COMMUNITY USE								
Weekday	10%	5%	5%	5%	5%	5%	% of coach time	
Weekend	20%	10%	10%	10%	10%	10%		
Monday	0.3	0.0	0.0	0.1	0.0	0.0	0.4 hrs	
Tuesday	0.3	0.0	0.0	0.1	0.0	0.0	0.4 hrs	
Wednesday	0.3	0.0	0.0	0.1	0.0	0.0	0.4 hrs	
Thursday	0.3	0.0	0.0	0.1	0.0	0.0	0.4 hrs	
Friday	0.3	0.0	0.0	0.1	0.0	0.0	0.4 hrs	
Saturday	0.5	0.0	0.1	0.1	0.0	0.0	0.8 hrs	
Sunday	0.5	0.0	0.1	0.1	0.0	0.0	0.8 hrs	
TOTAL	2.3	0.2	0.3	0.6	0.0	0.0	3.5 hrs per week (average)	
ANNUAL							180.18	

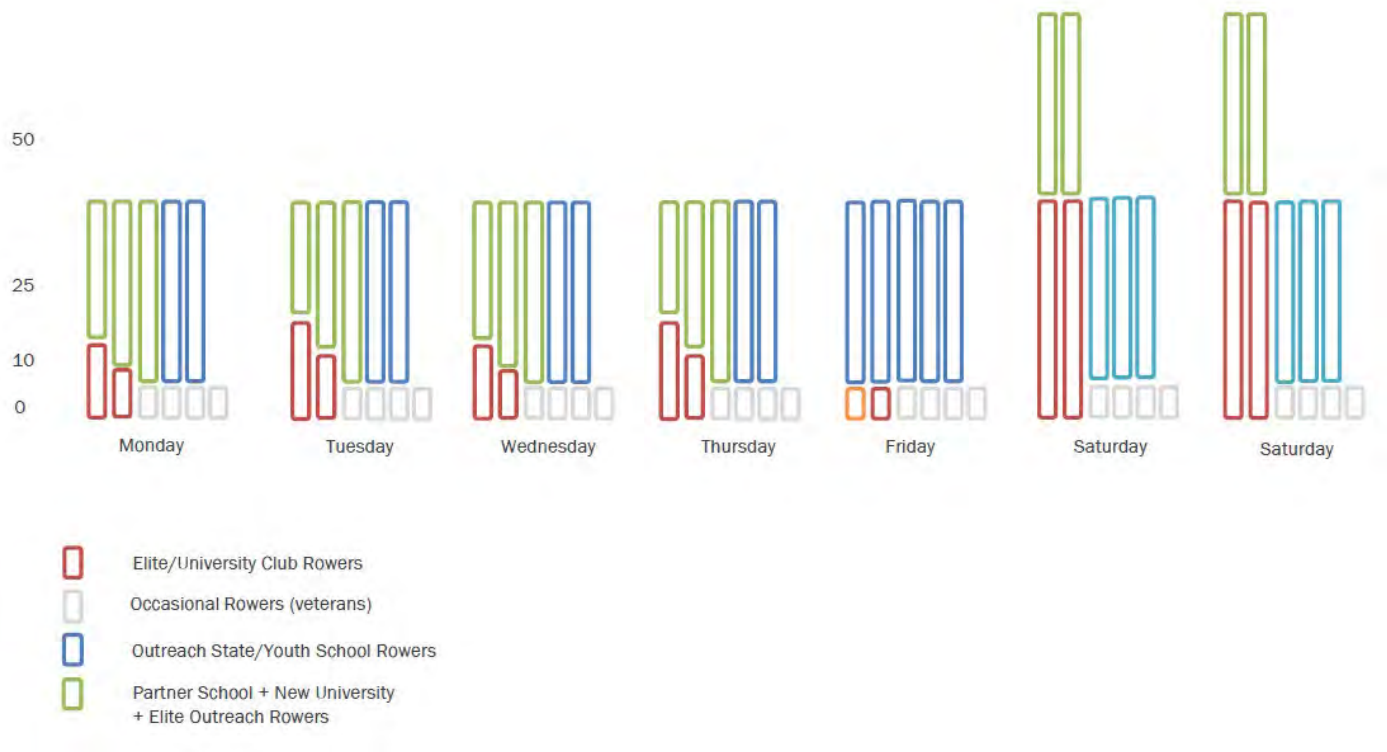
We showed that at the moment the site is hardly used at all (well apart from the end of the annual **Oxford v Cambridge** boat race) + that there was a LOT of **potential** to increase access...





We just had to secure planning consent for the **200%** uplift in footprint on **Metropolitan Open Land**. The same land Sadiq Khan pledged to **protect** in 2016, as others have before...

By creating a **multi-zone** well managed carbon neutral **boat store**, filled with posh school's boats, where we could develop a **downtime "tithing"** of boats + coaching time to the **outreach programme**...



QBC partnered **London Youth Rowing** to develop the programme in 2020...

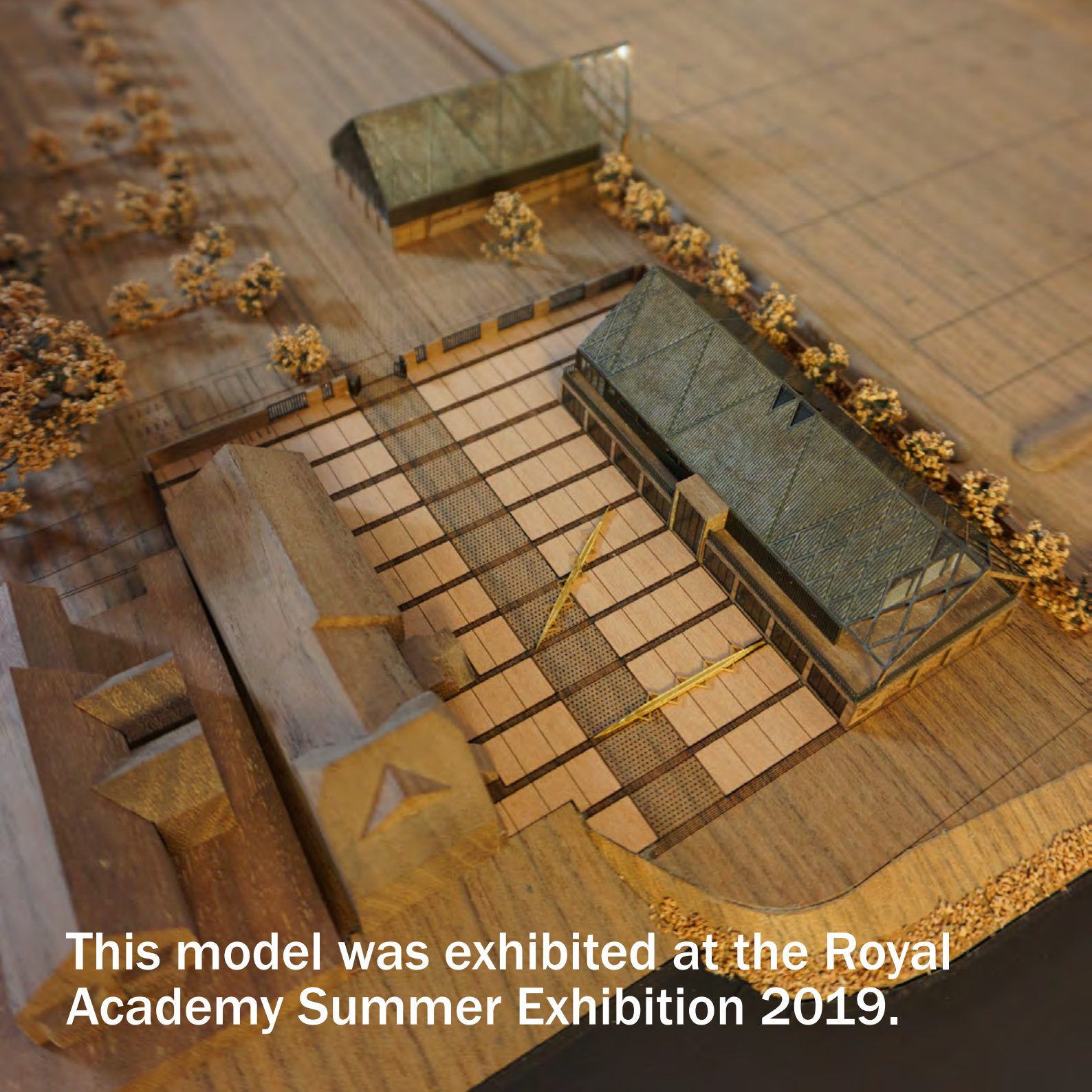


...and as we designed, that programme kicked off, in a small way. Eventually some **2000 non-fee paying** young rowers will come here annually...

...we threw in a new **Rugby Club facility** for the University of Westminster too, which will now be the basis of a partnership with **a major rugby club*** who are relocating to the site in 2025...



* it's a secret, cant tell you who yet...



This model was exhibited at the Royal Academy Summer Exhibition 2019.



We got our consent after 18 months +
we **started on site in** May 2020.

So why are we showing **you** this?

We have worked across many scales + typologies, with the same **energy + love**.

From large scale **housing, masterplans + workplace** to mixed scale bespoke buildings for **culture, sport, transport + education**.

We have **made a mark** wherever we work.

We know we can offer you a **unique** view on the projects and places you create, across the UK...

Family + Friends...

Our practice came about through a mutual need to work on projects we **love**, for the people we **trust + respect**, with the people we **love**.

Our team is a **little family**.

We have won new clients, but are **proud** to be working with many who have known us for years.

We like to make an **impact...**

Here's another story...



We were **invited** to build a bus station for the St Silas School client **BwD council**...

We set out to **sculpt** a new canopy that would visually **poke** the town in the eye + explore a formal **echo** of the past (in this case drying cotton bolts) while being unashamedly of the **future**.

It is an **Instagram** star now :)





It is also a **distinct urban intervention** to free up a new development site...

Part **regeneration**/part transport we created a building that expresses **civic pride** in a town that suffers from a lack of it...





PS: we had never done a bus station station before

Making places to live in;

We know that **good place-making** is about creating different **tenure homes + communities, mixing spaces + people**; excellence is not easy.

As a practice/team the last 3+ years have often been about creating **places to live**, larger in scale + in our case all about the **spaces in between** the buildings.

We continue to work at this scale seeking the opportunities with clients to make **simple but well made homes** which become part of a city...

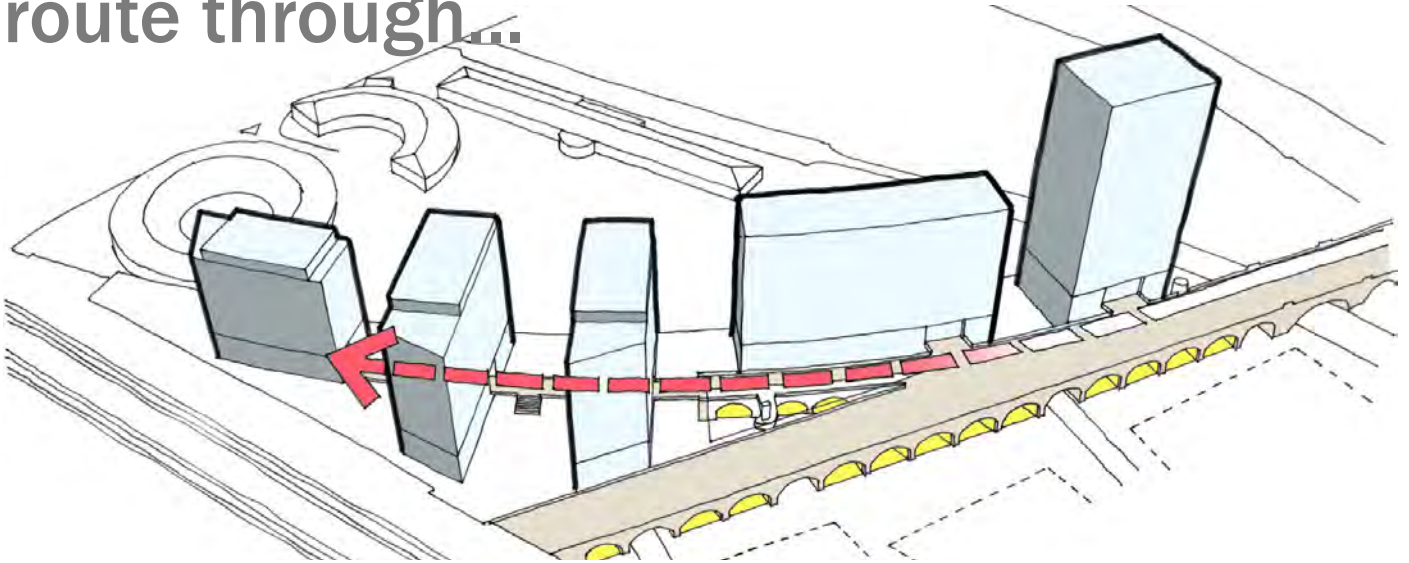
This is **Monkbridge**...in Leeds.





650 BTR homes alongside the canal and river just **10min** from the station...

We created a series of buildings along a **massive disused railway viaduct** which are linked by a new **800m park + public route** through...





The **energy** of the spaces under the arches links via spiral stairs to the top level park; this is true **regeneration**...



We **masterplanned** the scheme from 2015, then undertook reserved matters in 2018. Driving **efficiency** by **creating 52 additional** homes...



Our **studio** today;



We continue to major on **low carbon development / retrofit / adaptive reuse** of existing buildings where we find them, such as this **agricultural building** near Rochdale...

This **adaptive reuse** will bring that old barn into the 21st Century + beyond...



...which we are
converting into
a new **Golf Club**
at an established
course, set
in a landscape
with over
50,000 trees...

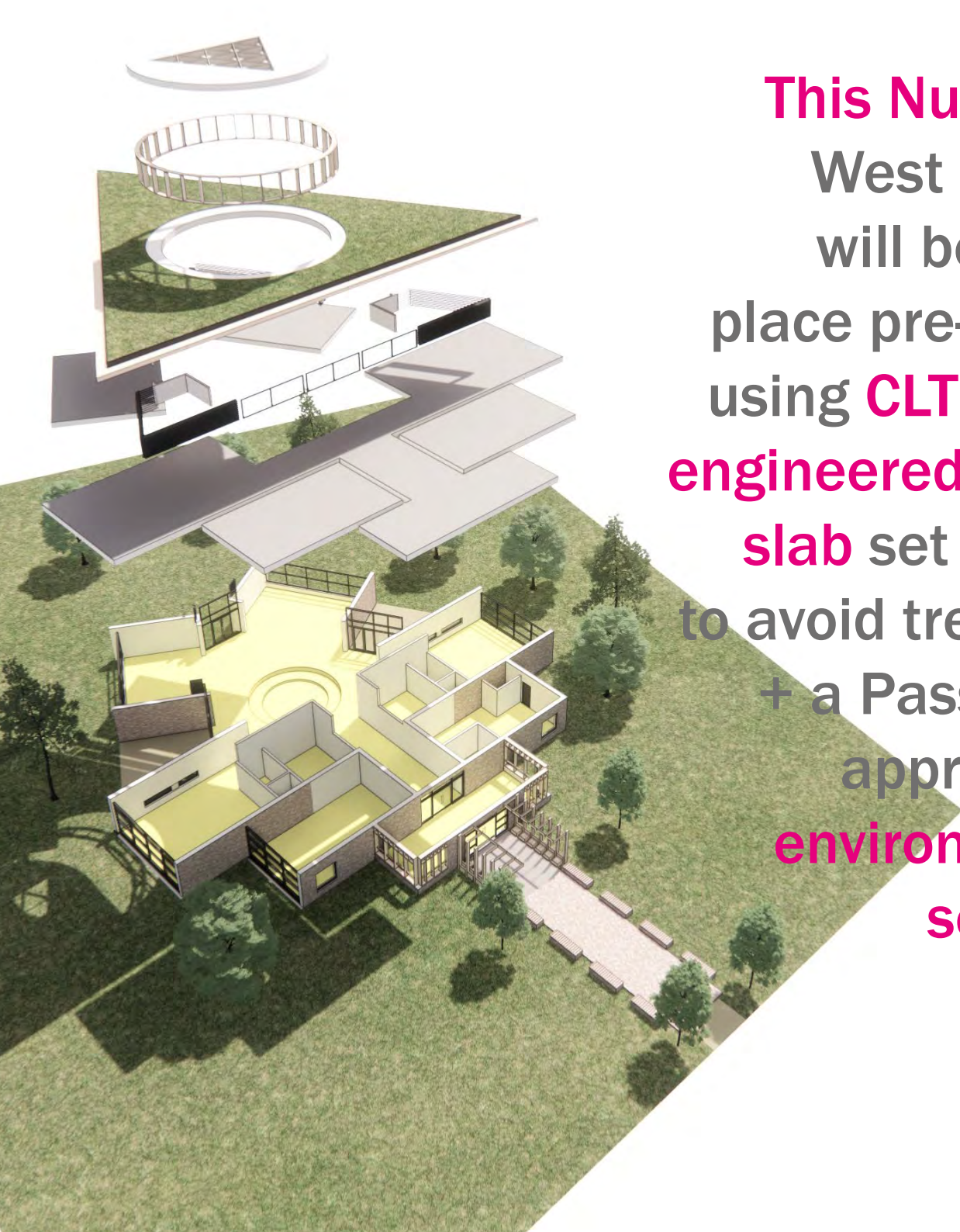




As you enter the building the course is **framed** by the club house space + the green of the trees becomes a **backdrop...**



The club house features a **20m linear window seat** which overlooks the club's man made lake...



This Nursery in West London will be an 80 place pre-school, using **CLT and an engineered timber slab** set on pins to avoid tree roots + a Passivhaus approach to **environmental services.**



This timber frame **zero carbon in use / low embodied carbon** light manufacturing facility is our first industrial project...



So the **big question** is, why work with us?

What could we do for **you**?

How can we help you **shape** the future of this part of the city,

make new **places richer + impact** positively the lives of communities; why work with us?

We hope our **approach + philosophy** is clear, our design methods apparent; we have the **experience + skills**, we have the **talents**.

We **don't do predictable, don't have a house style**. We see each project as a **story** yet to be told...



Founded in 2017 by Chris Boyce, a well known and respected architectural commentator, designer and former Design Director for one of the UK's top 10 largest practices, we are a small collective of architects, designers + makers with Assorted Skills + Talents*. We are VR\3D\BIM capable, agile thinking, strategic advisors. We are nimble + rigorous. We innovate to create value for our clients. We are 3 x RIBA national award winners, 4 x Civic Trust Award winners and have delivered as a team for a decade. We are most proud of the buildings we have created that can change lives, schools and public commissions which enrich and challenge their users, making life easier or just by adding a sprinkle of delight.

Located in London & Manchester we are able to support you nationally and further a field if required.

Bring us your next challenge and let's enjoy the process.



ASSORTED SKILLS + TALENTS

3 Cobourg Street
Manchester
M1 3GY
+44 161 713 0517

48 Charlotte Street
London
W1T 2NS
+44 203 701 0403

Architecture
Design
Strategy
Narrative
Communication

www.assortedskillstalents.com